

# Case Study

## Gateway 14 XT (Frontrunner XT)



### How do you prevent slips on a curved steel bridge that's completely exposed to the elements?

The river that cuts through the Swiss town of Gossau means visitors to Raiffeisen Bank have to cross a curved bridge to access the building – but the bridge's steel construction makes for a slippery, unsafe walkway, especially in winter.

#### The problem

The Raiffeisen Bank in Gossau, a municipality in the north-east Switzerland, forms part of a large retail complex where the shops are separated from the car park by a river. The bridge connecting the car park to the complex is curved, made from steel and gets very cold in the winter months. Throughout winter, the bridge would ice over, causing many pedestrians to slip as they dashed across from their cars to the bank.

#### The checklist

- ✓ Can be laid over an existing surface
- ✓ Flexible enough to contour seamlessly over a curved bridge surface
- ✓ Strong enough to withstand heavy foot and traffic wheel traffic
- ✓ Delivers superior slip resistance
- ✓ Quickly drains and dissipates large amounts of water

#### At a glance



##### Client

Raiffeisen Bank

##### Brief

Heavy-duty, slip-resistant entrance matting that can be loose laid over an existing, curved surface.

##### Location

Gossau, Switzerland

##### Environment

Walkway

##### Industry

Retail

##### Needs

Drainage, fall through, heavy duty, slip resistance

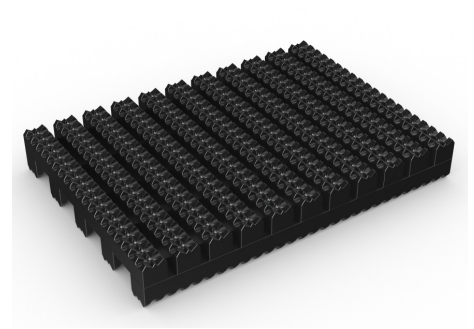
#### Plastex Matting Inc.

120 55th St NE  
Fort Payne, AL 35967  
+1 256 845 7725

USA + UK manufactured  
matting products:  
[plastexmatting.com](http://plastexmatting.com)

# Case Study

## Gateway I4 XT



### The solution

Flooring specialist Wibatec recommended Gateway I4 XT, our heavy-duty entrance matting, as the perfect solution for this unique application. Specifically designed to withstand extreme weather conditions, the matting has an open grid that quickly drains and dissipates water; ice and snow, plus a deep-etched tread for collecting and trapping dirt and debris. This extra aggressive surface provides pedestrians with extra traction underfoot.

Made from flexible PVC, the matting is malleable enough to follow the curve of the bridge yet sturdy enough to remain in place – even when the steel is completely iced over. The one-piece construction means the matting can be cut to fit on site, with no previous site visits needed.

“This was an interesting application which presented a unique set of difficulties. We had to find a matting which was loose laid, flexible enough to follow the curve of the bridge yet sturdy enough to remain in place, even when the steel was completely iced over. We knew Gateway I4 XT would provide the perfect answer.”

Ivan Wigger, manager, Wibatec



### Product spotlight: Gateway I4 XT

Gateway I4 XT is a heavy-duty entrance mat designed to combat substantial amounts of dirt and large debris.

#### Features:



Diamond cut pattern



Two layer open-grid construction



Close mesh grid



Made from flexible PVC



Comes in 10m (33') rolls

#### Benefits:



Certified slip resistance (DIN 51130:R12)



Excellent drainage (DIN 51130:V10)



Wheel- and heel-proof



Easy to cut on site, contours to uneven surfaces



Seamless installation